



MONTHLY MEMBERSHIP PROGRESS REPORT

District 34 B

Results as of: 06/30/2019

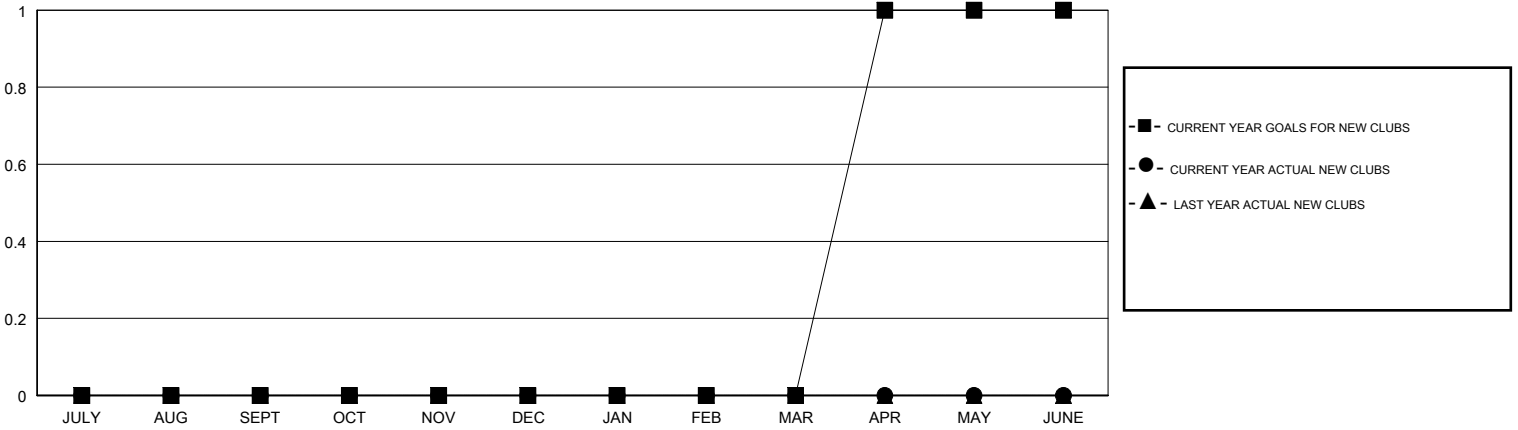
GMT: OPEN

LOCATION ALABAMA

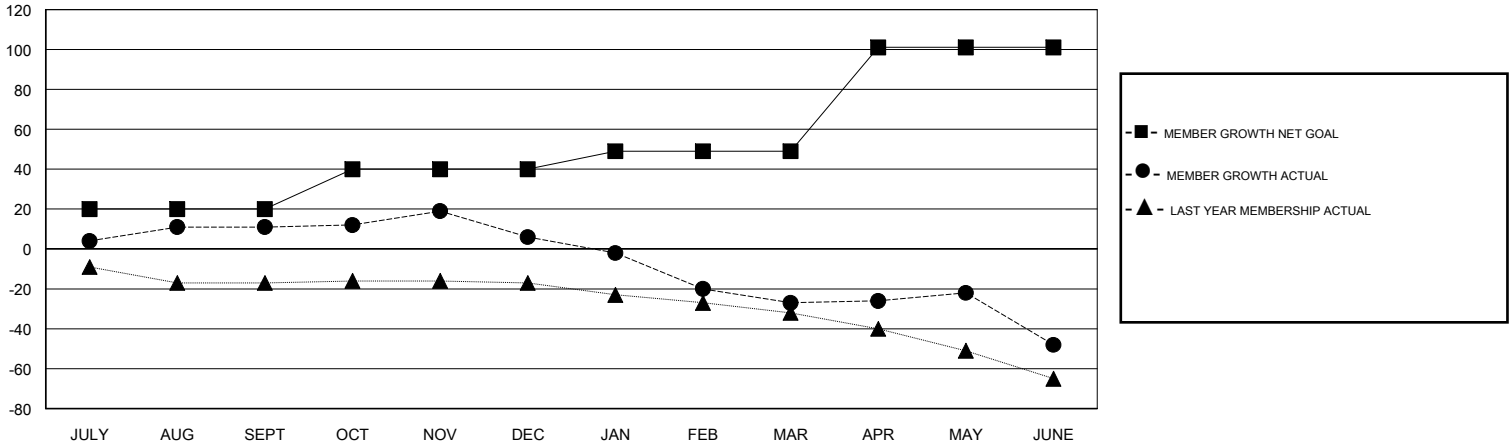
GMT CA

| Clubs | | | | Members | | | |
|-----------------------|---------------|-----------|---------------|-----------------------|------------------------|----------------------|--|
| RESULTS FOR 2018-2019 | | | | RESULTS FOR 2018-2019 | | | |
| QUARTER | NEW CLUB GOAL | NEW CLUBS | DROPPED CLUBS | QUARTER | MEMBER GROWTH NET GOAL | MEMBER GROWTH ACTUAL | DROPPED MEMBERS ACTUAL (including transfers) |
| JULY/AUG/SEPT | 0 | 0 | 0 | JULY/AUG/SEPT | 20 | 26 | 15 |
| OCT/NOV/DEC | 0 | 0 | 0 | OCT/NOV/DEC | 20 | 18 | 22 |
| JAN/FEB/MAR | 0 | 0 | 1 | JAN/FEB/MAR | 9 | 20 | 52 |
| APR/MAY/JUNE | 1 | 0 | 1 | APR/MAY/JUNE | 52 | 10 | 31 |

GOALS AND ACTUAL NEW CLUBS CUMULATIVE



GOALS AND ACTUAL MEMBERS CUMULATIVE



| | | | |
|------------------|--|--|--------------|
| DROPPED CLUBS: 2 | 23 CLUBS OF 44 ADDED 1 OR MORE NEW MEMBERS | <u>GENDER DISTRIBUTION</u> | |
| DROPPED MEMBERS | | MALE | 603 (77.21%) |
| DECEASED | 17 | FEMALE | 178 (22.79%) |
| CLUB CANCELLED | 17 | Women Percentage Fiscal Year Goal: 27% | |
| OTHER | 86 | TOTAL FAMILY UNIT MEMBERS | 108 |
| TOTAL | 120 | FAMILY MEMBERS PAYING HALF DUES | 55 |

[CLICK HERE FOR CUMULATIVE MEMBERSHIP DATA](#)